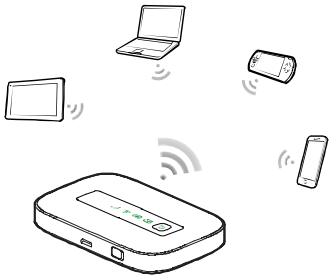


Thank you for purchasing the Huawei E5332 Mobile WiFi. This quick start guide will help you to get started right away.

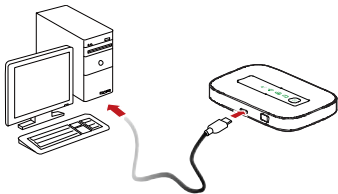
You can connect your Huawei E5332 to the internet through any WiFi enabled device such as smartphones, tablet computers, and game consoles. The specific connection procedure depends on the operating system of the WiFi device or computer. Establish a connection according to your device's specific instructions. Please see connection scenario on the next page for your reference.

To access the Internet through a USB port connection, install the driver according to the instructions.

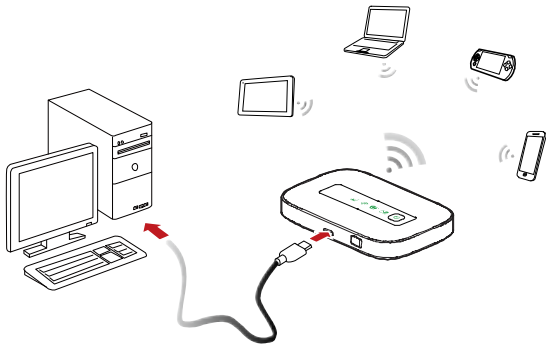
Scenario 1: Connecting multiple devices through Wi-Fi



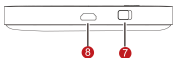
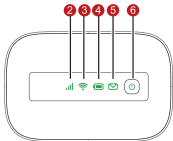
Scenario 2: Connecting a single device through USB



Scenario 3: Connecting multiple devices through Wi-Fi and USB simultaneously
















Getting to know your Huawei E5332 Mobile WiFi device



- ① Lanyard hole
- ② Signal indicator
- ③ Wi-Fi indicator
- ④ Battery indicator

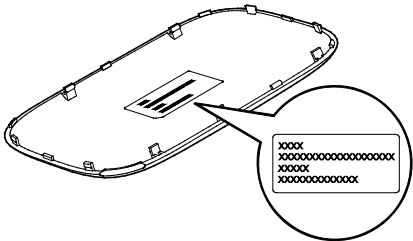
- ⑤ Messages indicator
- ⑥ Power button
- ⑦ External antenna port (TS-9)
- ⑧ Micro USB port

Indicators

Indicator	Status	Description
 Signal	Green 	Strong signal
	Orange 	Weak signal
	Red 	No signal
 Wi-Fi	Green 	Wi-Fi turned on
 Battery	Green 	Sufficient battery
	Blinking green 	Charging the battery
	Red 	Low battery
 Messages	Green 	New message
	Blinking green 	Inbox full

SSID and Wireless Network Encryption Key

When a Wi-Fi device establishes a connection to the Mobile WiFi for the first time, you may need to enter the default Service Set Identifier (SSID) and wireless network encryption key. These are printed on the Mobile WiFi label.



Getting Started

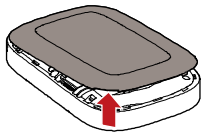
Inserting the SIM Card

Caution: Use a standard SIM card compatible with the Mobile WiFi, otherwise you will damage your Mobile WiFi. Ensure your SIM card is data enabled

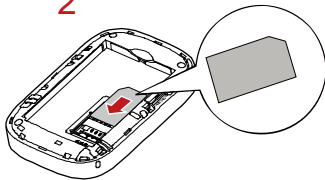
Insert the SIM card according to the illustration.



1



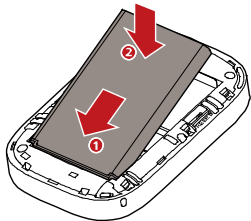
2



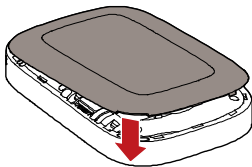
Inserting the Battery

Insert the battery according to the illustration.

1



2



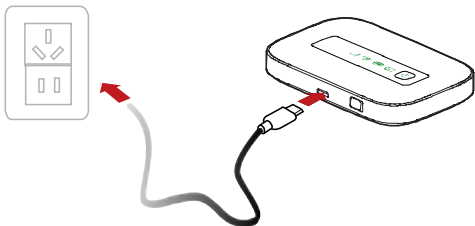
Charging the Battery

If the battery has not been used for an extended period of time, recharge it before use.

Method 1: Use the power adapter to charge the device

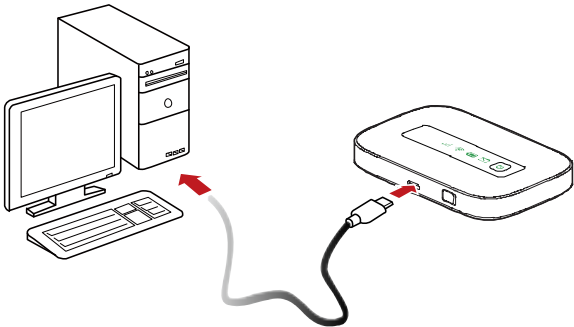
Note:

- Only use chargers compatible with the Mobile WiFi and provided by a designated manufacturer (HW-050100E1W). Use of an incompatible charger or one from an unknown manufacturer may cause the Mobile WiFi to malfunction, fail, or could even cause a fire. Such use voids all warranties, whether expressed or implied, on the product.



Method 2: Charge the device through a computer connection

Use the data cable provided with your device to connect the Huawei E5332 to the computer.



Connecting to the Internet via WiFi

The Mobile WiFi's management parameters have been preset according to your operator's requirements. You can quickly connect to the Internet by following these steps.

Step 1: Turn on the Mobile WiFi

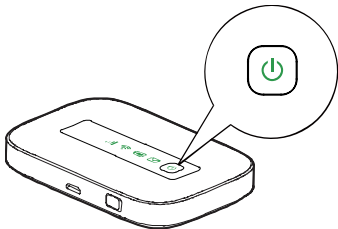
Press and hold the  button until the indicator lights up, indicating that the Mobile WiFi is turned on.

Note:

Press and hold the  button to turn off the Mobile WiFi.

Step 2. Establish a Wi-Fi connection (using a computer running the Windows XP operating system as an example)

1. Ensure that  is displayed in green.



2. Select "Start "> "Control Panel "> "Network Connections" > "Wireless Network Connection".

Note:

Before establishing a Wi-Fi connection, ensure that the computer is equipped with a wireless network adapter. If the computer indicates a wireless network connection, the wireless network adapter can be used. Otherwise, verify that your wireless network adapter is working properly.

3. Click **View available wireless networks** to view a list of available wireless networks.
4. Select the wireless network connection with the Mobile WiFi's SSID and click **Connect**.

Note:

- If the wireless network connection is encrypted, enter the correct wireless network encryption key.
 - The default SSID and encryption key are printed on the Mobile WiFi's label.
5. Wait a moment for the wireless network connection icon to appear in the system tray in the lower right corner of the computer screen. The wireless network connection is then established.

Step 3: Connect to the Internet

After successfully establishing a WiFi connection, you can connect to the Internet using the following methods.

Note:

Select an appropriate internet connection mode according to your billing method. For instance, if your network service calculates your bill by network connection time, it is recommended that you select manual connection mode. For detailed information about your network fees, please contact your operator.

Mode	Operations
Automatic	If data is transmitted, the Mobile WiFi will automatically connect to the Internet. If data is not transmitted for a period of time, the Mobile WiFi will automatically disconnect from the network connection.
Manual	After logging in to the web management page, connect to or disconnect from the network according to the instructions.

Note:

- You can log into the web management page and select an Internet connection mode.
- You can enable or disable the automatic dialing while roaming function. If this function is turned off, when the Mobile WiFi enters a roaming network, it will automatically disconnect from the Internet connection that has already been established. You will need to manually establish this network connection again.

Logging in to the Web Management Page


1. Make sure the connection between the Mobile WiFi and the Wi-Fi device or computer is working normally.
2. Open the browser, and enter **http://192.168.1.1** in the address box.
3. Enter the password to log in to the web management page.

Note:

The default password is **admin**.

Daily Use

Battery Saving Mode

If the Mobile WiFi has been inactive for some time, the Mobile WiFi enters the standby mode, in which the battery indicator () blinks slowly and the other indicators are off. Pressing the power button causes the indicator to light up.

When the Mobile WiFi is being powered only by the battery, you can choose to enable or disable the automatic WiFi turnoff function. If this function is enabled and if no WiFi device was accessed the Mobile WiFi for a period of time, the WiFi turns off automatically. You can press the power button to turn the WiFi on again.

Verifying the PIN

If the PIN verification function is enabled, log in to the web management page and enter the correct PIN according to the instructions. PIN/PUK codes are supplied by your operator along with the SIM card. For details, please consult your operator.

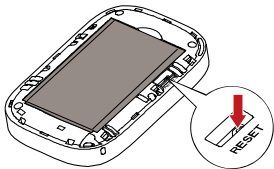
Restoring to Factory Settings

If you forget some configuration parameters, you can restore the Mobile WiFi to its factory settings and then configure the Mobile WiFi again.

Press and hold the **RESET** button until the indicators turn off. The Mobile WiFi is then restored to its factory settings.

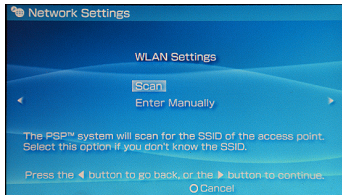
Note:

After you carry out this operation, the Mobile WiFi's personal configuration parameters will all be deleted. All configurations on the web management page will be restored to the factory settings.



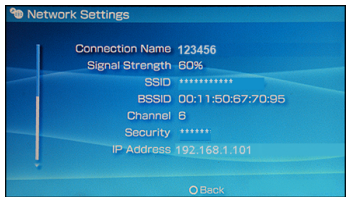
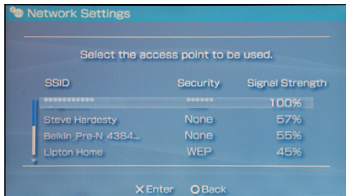
Example 1: Connecting to a Game Console (for example, PSP) through Wi-Fi

1. On the PSP, turn on the WLAN.
2. Choose **"Settings" > "Network Settings"**.
3. Select **"Infrastructure Mode"**.
4. Select **"New Connection"**, and enter the connection name.
5. Select **"Scan"** to search for wireless networks. A list of access points will be displayed on the screen.
6. Select the access point with the Mobile WiFi's SSID, and press the **"▶"** button on the PSP. Confirm the SSID, and enter the correct wireless network encryption key.
7. Press the **"▶"** button to proceed to the next step, and then press the **"X"** button



to save settings.

8. Select **Test Connection** to test whether the network connection is successful.
9. You can now open the browser and access the network.

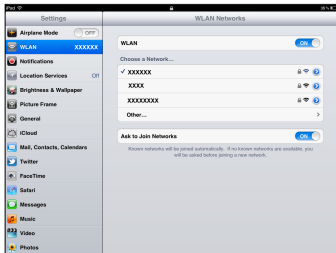


Example 2: Connecting to a Tablet Computer (for example, iPad) through Wi-Fi

1. Touch **“Settings”** > **“WLAN”** to turn on WLAN.
2. The tablet computer automatically searches for wireless connections and displays a list of access points.
3. Select the access point with the Mobile WiFi's SSID.
4. If required, enter the correct wireless network encryption key, and tap **“Join”**. (The lock icon indicates that the encryption key is required to connect to this wireless network.)

Note:

WiFi devices, such as an iPhone, iPod touch, PS3 and NDSi, can all access the Internet through the Mobile WiFi. For specific operations, refer to the WiFi device's user manual.



Tips

When the Mobile WiFi is in use for an extended period of time, it will become warm and may overheat. Should this happen, the Mobile WiFi will automatically close the network connection and turn off to protect itself from damage. If this occurs, place the Mobile WiFi in a well ventilated space to allow the heat to dissipate, then turn it on and continue to use it as normal.

If you are unable to use the Mobile WiFi as normal, try the following:

- Consult the online help on the web management page.
- Restart the Mobile WiFi.
- Restore the Mobile WiFi to the factory settings.
- Consult your operator.

Version: V100R001_01 Part Number: 31010KJB